

GRAND SLOTS

good friends • great times



The Grandslots CSI motto is “Enriching Lives and Uplifting Communities”. We believe in ploughing back into the communities, especially in the area where we are represented. We are grateful to have partnered with some amazing organisations over the past years and even more so during the COVID-19 pandemic where we were involved in a number of relief projects. It is our mission to impact as many lives as possible and have been fortunate to donate over R35 million over the past 10 years. Our 2020 CSI process will be commencing shortly where we will once again be Enriching Lives and Uplifting Communities.



DE HEIDE SPECIAL CARE CENTRE

“De Heide Special Care Centre is a beneficiary of the GrandSlots Corporate Social Investment Programme. Funding awarded by Grandslots is used for the delivery of therapeutic interventions provided for children with severe to profound disabilities.

The children at De Heide Special Care Centre are among the most vulnerable groups in our society and live with their families in disadvantaged communities. By engaging in significant programmes with these children, the Western Cape Cerebral Palsy Association addresses the discrimination they suffer.

De Heide children have cerebral palsy resulting in severe intellectual and physical disabilities as well as secondary disabilities such as visual and hearing impairments. Therapeutic interventions improve functional and motor development. These benefits effectively reduce the risk of further deformities by arresting existing abnormalities, maintaining tone and positioning and improving communication skills. All these benefits enable the children of De Heide Special Care Centre to experience a feeling of self-worth and upliftment. The daily therapeutic programmes and the care provided by The Western Cape Cerebral Palsy Association give them a sense of belonging and being loved.

During the Covid-19 pandemic the vulnerability of the De Heide children has forced disruption on service delivery at De Heide Special Care Centre which has been impossible for the children to properly understand and has put enormous strain on their families who already face extreme difficulties every day. The eagerly awaited return to ‘normal’ will be a joy for the children, their parents, and the whole of our organisation which is dedicated to service provision addressing the needs of people with disabilities.”

CHILD WELFARE SA HELDEBERG

“Child Welfare South Africa Helderberg (CWSAH) was the recipient of the generous R100 000 donation from Grandslots Gaming CSI in December 2020.

CWSAH performs essential and continuous child protection services to the vulnerable children in designated areas of the Helderberg basin. Our primary focus is the protection of children on a daily basis but also includes raising awareness through various programmes of how children can keep themselves safe and how communities need to protect the children within their communities. The organisation works specifically in Sir Lowry's Pass Village and Macassar communities, both of which have extremely challenging social issues, family dysfunction and high levels of poverty. The Covid pandemic has made our challenge all the more difficult but we have adapted to ensure we still provide the community with the service of child safety.”

ELKANA CHILDCARE

“Firstly, we would like to thank Grandslots once again for funding us with the amount of R150 000 which, was received on 17/12/2020.”

O GRACE LAND

“We hope that Grandslots will continue to support these young women, and hopefully increase the support from the previous year as to reach more young women with their education. We have increased the number of young women, that we will be impacting this current year.”

BEAUTIFUL GATE SOUTH AFRICA

“Thank you Grandslots Gaming for your generous support of R200 000 towards our Learner Education Support programme in 2020. Our programme provides support to 1 000 primary school learners, in partnership with seven primary schools and 250 high school learners living in the community. The funds were used to assist our primary school intervention.”



BEAUTIFUL GATE MINISTRY

Contributed R200 000

Assists disadvantaged children, creates a safe environment and empowers families and communities to take care of their children through the development and provision of Christ-centred training, education and discipline.

CHILD WELFARE SA HELDERBERG

Contributed R100 000

The Organisations main focus is the protection of children, but also include raising awareness of how children can keep themselves safe and how communities need to be caring for and protecting other children.



O'GRACELAND

Contributed R250 000

Assists vulnerable young women ageing out of Children's Homes who are less likely to have high school diploma, assist them to pursue higher education or to earn a living wage.

WESTERN CAPE CEREBRAL PALSY ASSOCIATION

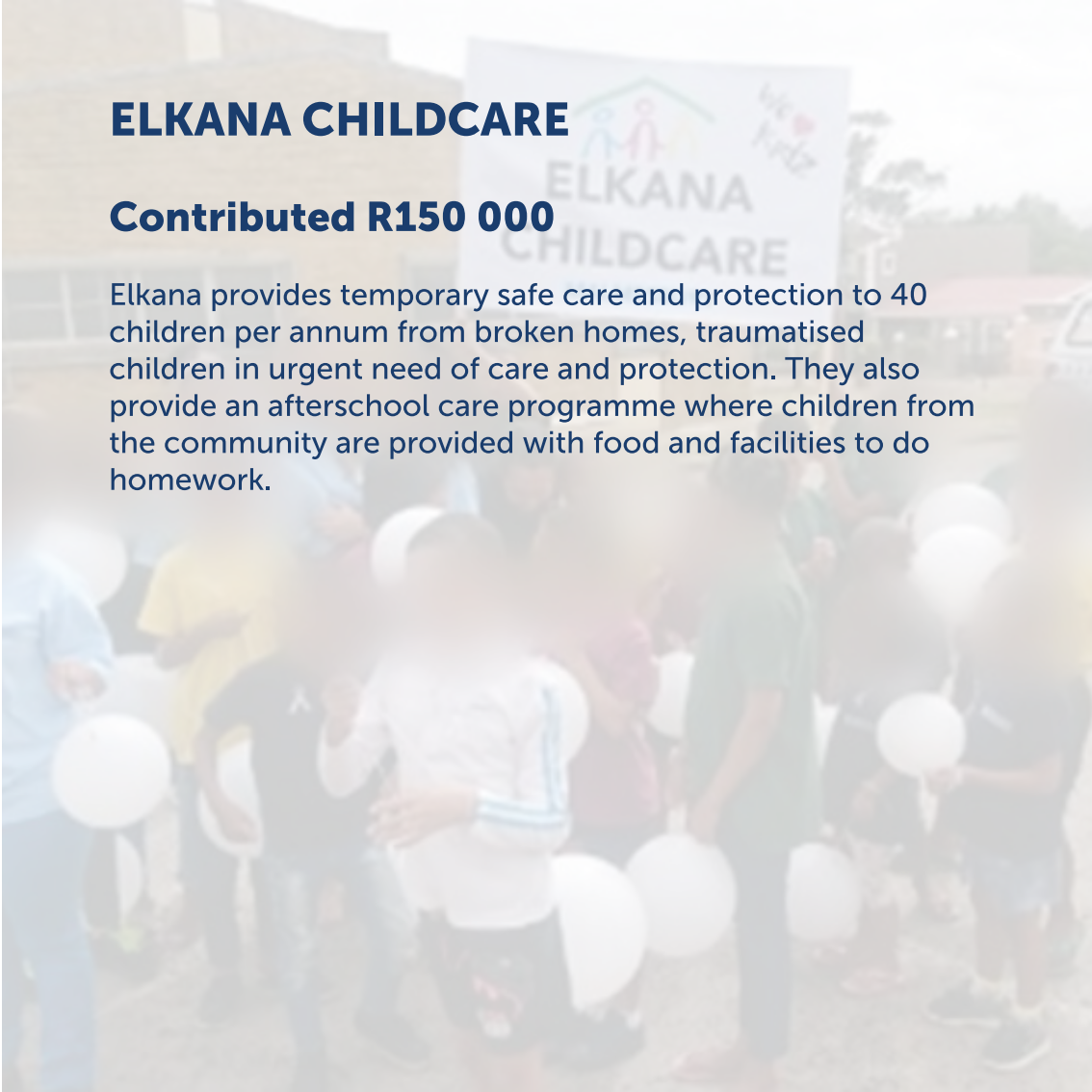
Contributed R132 000

The WCCPA provides social development services for people with Cerebral Palsy and their families. They incorporate a clinic for the diagnosis and treatment of children, who are severely and profoundly disabled, a protective employment workshop for adults and an occupational therapy day programme for adults. The Cerebral Palsy clinic provides holistic, compassionate family-based services where children are encouraged to reach their full potential.

ELKANA CHILDCARE

Contributed R150 000

Elkana provides temporary safe care and protection to 40 children per annum from broken homes, traumatised children in urgent need of care and protection. They also provide an afterschool care programme where children from the community are provided with food and facilities to do homework.



BREED VALLEY ASSOCIATION FOR PERSON WITH DISABILITIES

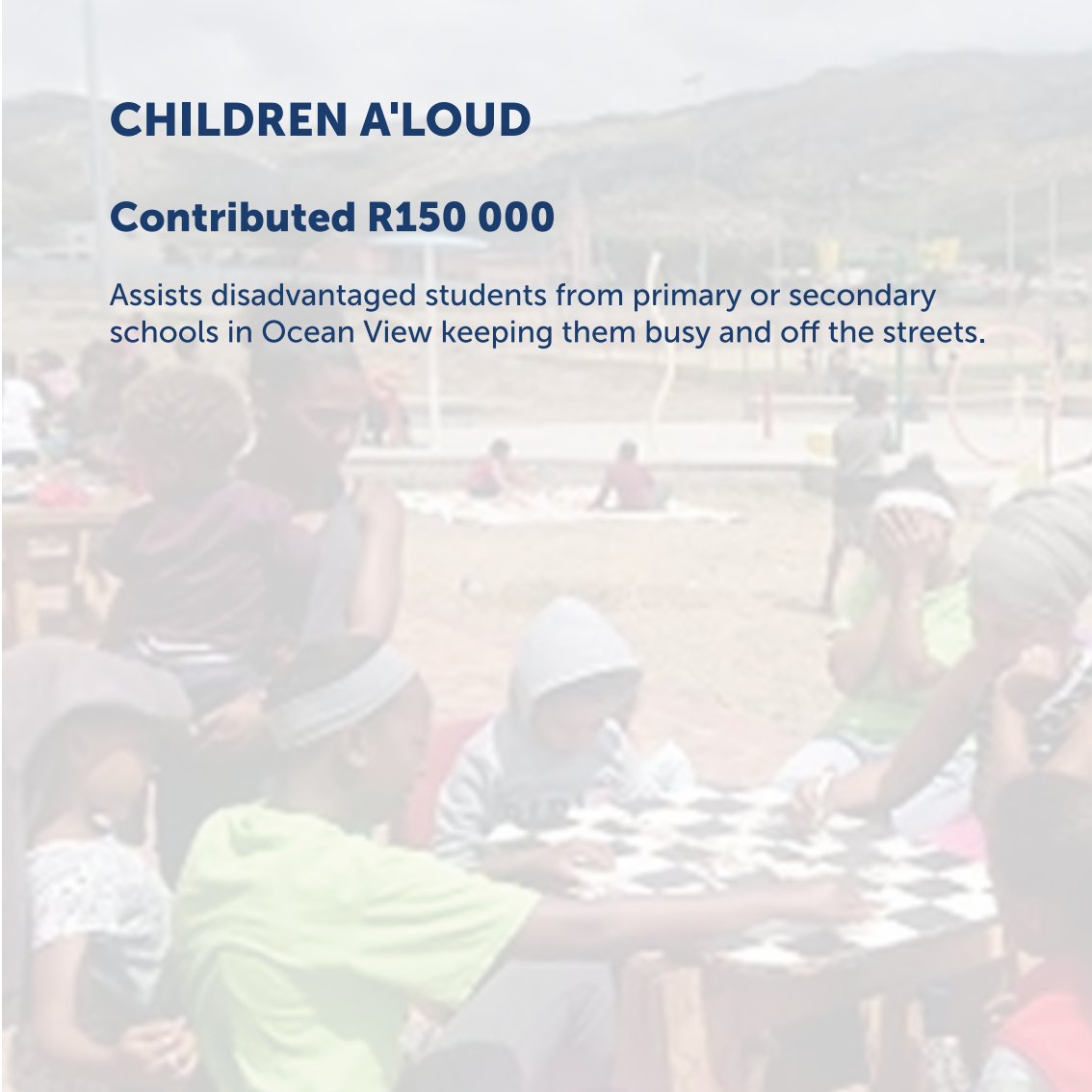
Contributed R200 000

The centre assists with providing educational development, physical development, training, stimulation and care for 21 children with disabilities in a community long deprived of these resources.

CHILDREN A'LOUD

Contributed R150 000

Assists disadvantaged students from primary or secondary schools in Ocean View keeping them busy and off the streets.



DIE EILAND HUIS

Contributed R150 000

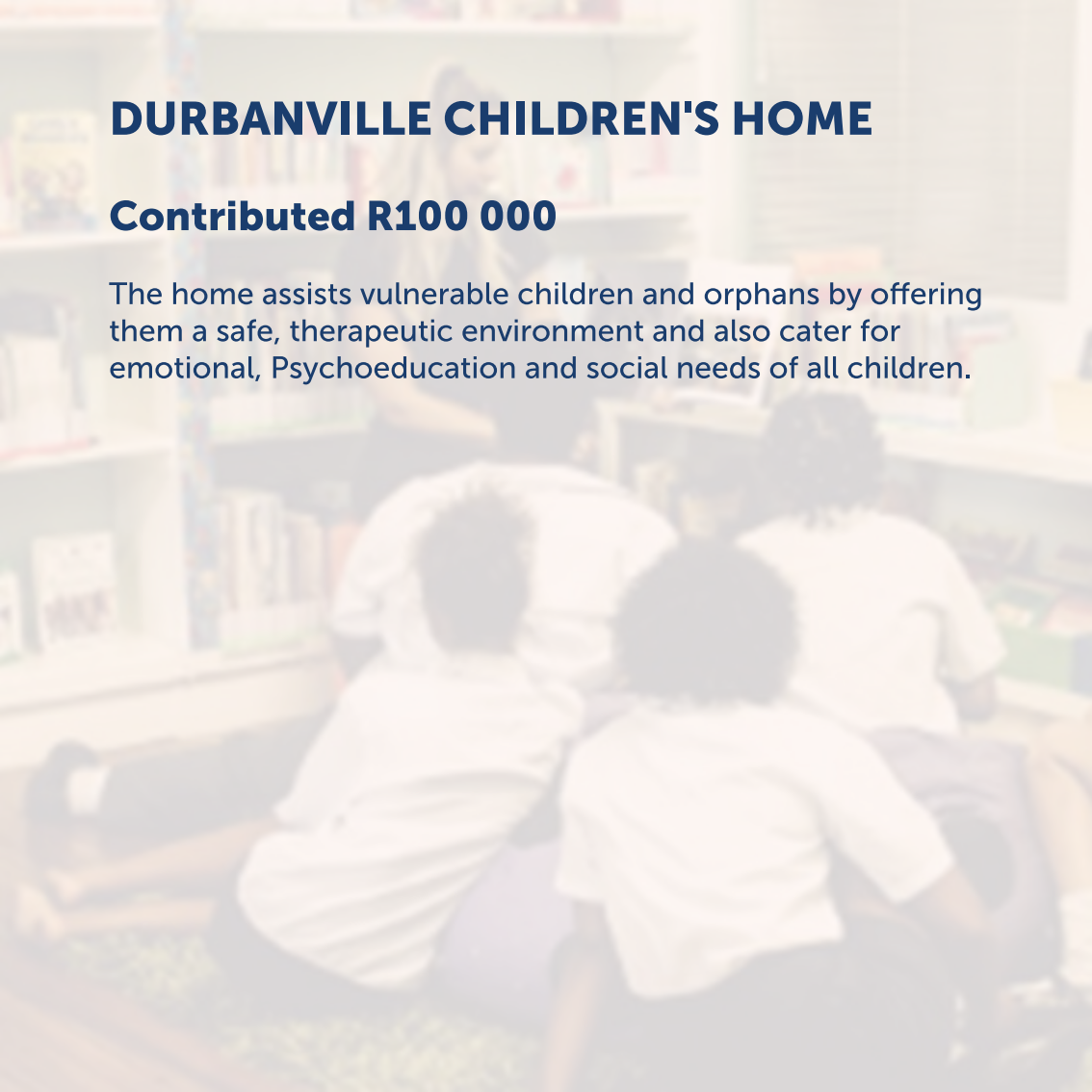
The house cares for and trains intellectually challenged children and adolescents.



DURBANVILLE CHILDREN'S HOME

Contributed R100 000

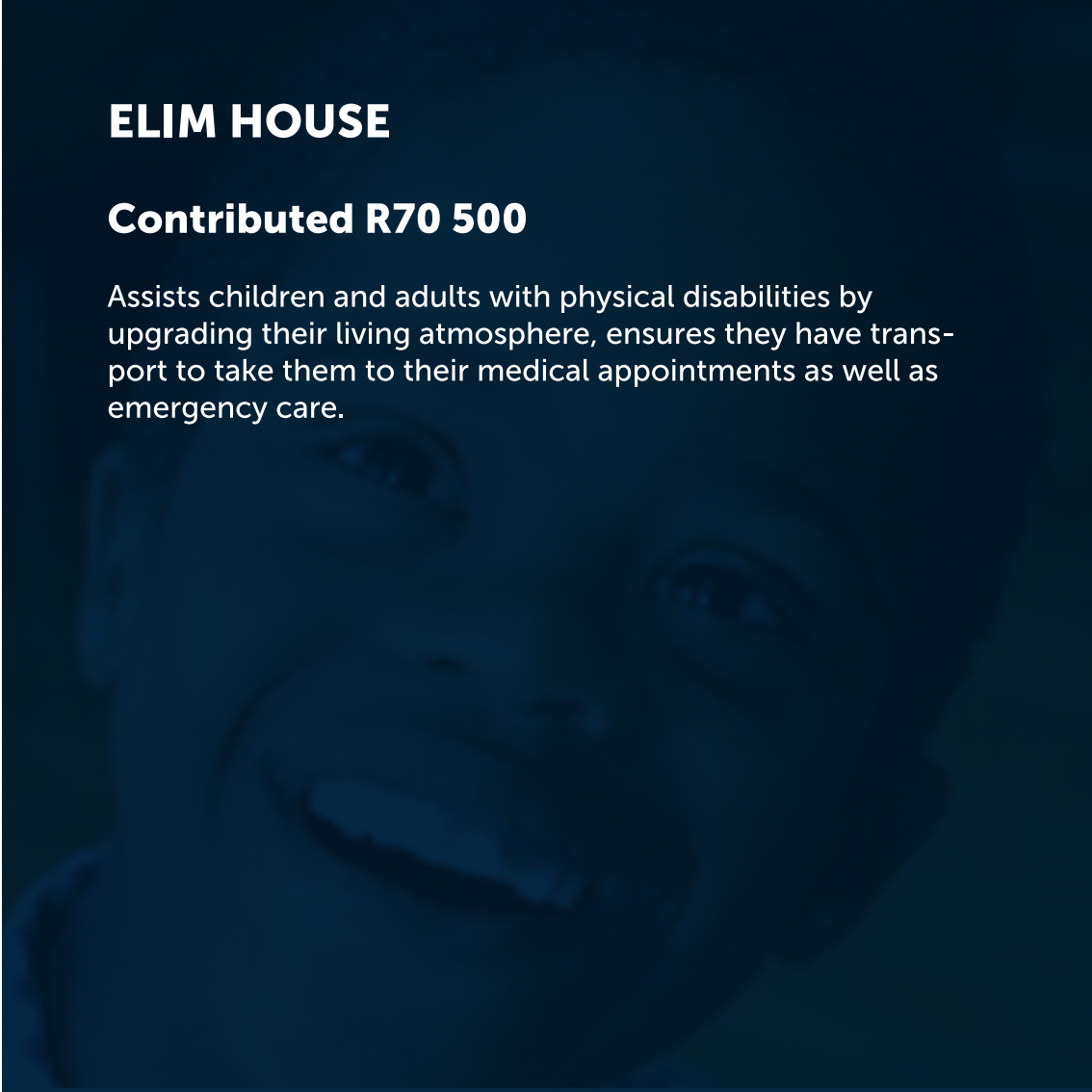
The home assists vulnerable children and orphans by offering them a safe, therapeutic environment and also cater for emotional, Psychoeducation and social needs of all children.



ELIM HOUSE

Contributed R70 500

Assists children and adults with physical disabilities by upgrading their living atmosphere, ensures they have transport to take them to their medical appointments as well as emergency care.



ELS AUTISM

Contributed R25 520

Aims to provide families across the globe with the best practice interventions and support, empowers parents and caregivers by teaching them how to teach their children. Each session is designed to promote parents independence using online tools.

EPILEPSY SA EDUCATIONAL TRUST

Contributed R100 000

Advocacy and human rights development and is initiated via training programmes at the individual trainer level. They also offer social development services such as counselling, health and welfare, services, child and youth development and life skills training.

A close-up, slightly blurred photograph of a young child with a joyful expression, wearing a light pink hospital gown. The child is the central focus of the image, which serves as the background for the text.

GABRIELA CENTRE

Contributed R100 000

It is a facility for children and young adults with profound physical and intellectual disabilities, such as cerebral palsy. The centre provides 24-hour care in a home from the home environment along with unlimited patience and unconditional love.

FRIENDS DAY CENTRE

Contributed R100 000

Assists children and young adults with severe mental and physical disabilities.

GIRLS AND BOYS TOWN

Contributed R100 000

Creates opportunities for youth to shine, grown and develop into responsible citizen and be able to contribute to family and community life in the spirit of peace, dignity, equality and solidarity with others.



IKAMVA LABANTU CHARITABLE TRUST

Contributed R100 000

Ikamva Labantu is a pioneer in supporting community preschools, compassionate women created community preschools, offering children safe spaces in their homes while their parents worked.



IKAMVA LISEZANDLENI ZETHU

Contributed R100 000

Ikamva Youth gives access to quality tutorials and career guidance. They provide after-school support for grade 8-12 learners in order to improve their academic outcome. Their model uses peer-based support, group tuition, grade 12 mentoring. They also provide access to computers and ed-tech products.



INSPIRE CHILDREN AND YOUTH TRUST

Contributed R10 000

Inspire rural people to achieve and create safe spaces for children and young people who thrive. They provide food, shelter and a wide range of activities/ project to help restore human dignity on rural farms.

A background image showing four children from behind, standing outdoors with their arms raised in the air. They are wearing casual clothing like hoodies and patterned pants. The image is slightly faded to allow text to be read over it.

JAMES HOUSE

Contributed R195 225

James House aims to uplift the community by providing psychological support to the children and families who suffer from severe traumas of substance abuse, unemployment and neglect.

JELLY BEANZ

Contributed R100 000

The Organisations assist children from underprivileged communities that have experienced trauma, abuse and neglect including their caregivers and professionals that work with children.



KHAYELITSHA HOSPITAL

Contributed R220 000

Khayelitsha District Hospital is in an area predominantly Xhosa speaking with a high unemployment rate. The patients receive free healthcare services to the majority of the patients.



NINE MILES PROJECTS

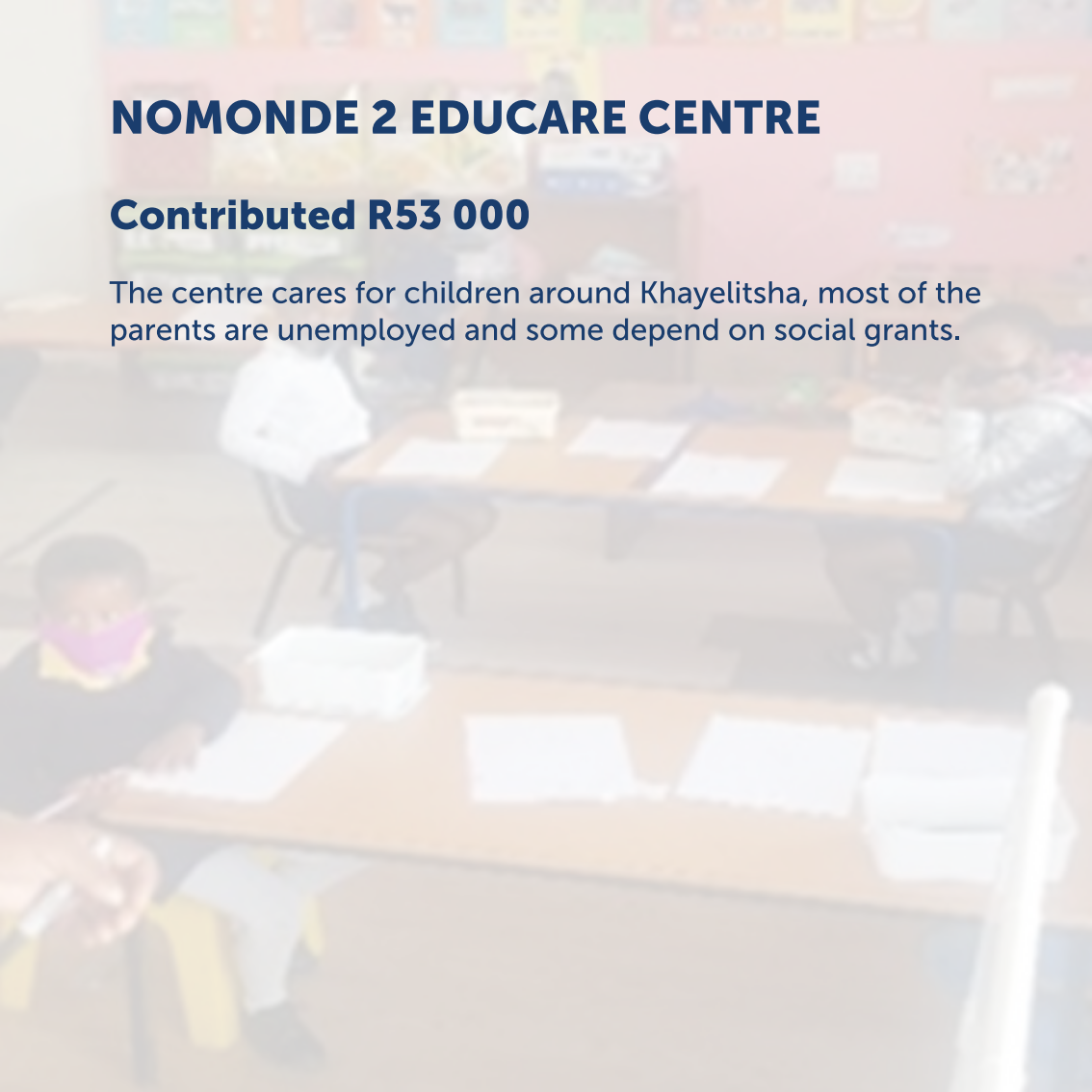
Contributed R100 000

The organisation works with youth in coastal informal settlements and provides mentorship to at-risk youth in the areas of Cape Town, Elands Bay and St Francis Bay. The children attend literacy and empowerment programmes 6 days a week in Cape Town and received meals and snacks.

NOMONDE 2 EDUCARE CENTRE

Contributed R53 000

The centre cares for children around Khayelitsha, most of the parents are unemployed and some depend on social grants.



NORSA COMMUNITY CARE

Contributed R250 000

Assists orphans and vulnerable children living in the township that are deprived of most of their basic needs. Norsa assist these children with cooked meals, health care programme, daycare centres and youth development.



PLAY SPORT FOR LIFE

Contributed R50 000

Their mission is to improve the lives and well beings of disadvantaged communities by providing athletic opportunities and using sports as a vehicle for a healthier lifestyle.

SOUTH AFRICAN EDUCATION PROJECT (SAEP)

Contributed R130 000

Assist learners from primary school level through high school, post-matric and into tertiary. ECD beneficiaries are principals of creches and daycares and indirectly children enrolled in the facilities.

ST JOSEPH'S HOME

Contributed R120 000

St Josephs provide educational services to chronically ill learners with a vast spectrum of special needs, including children with autism, cerebral palsy, down syndrome as well as medical conditions.



STEPS CHARITY

Contributed R200 000

Assists babies with birth defects such as clubfoot up to 5 years.

A faded background image of a classroom scene. In the foreground, a student with dark hair, wearing a red and black patterned shirt, is leaning over a desk, writing on a piece of paper with a pen. On the desk, there is a blue folder, a blue cup holding several pens and pencils, and some papers. In the background, another student is visible, and the wall is decorated with various posters and drawings.

PLAY SPORT FOR LIFE

Contributed R50 000

Their mission is to improve the lives and well beings of disadvantaged communities by providing athletic opportunities and using sports as a vehicle for a healthier lifestyle.

THE UMTSHAYELO FOUNDATION

Contributed R135 000

Provide skills development program to empower young and unemployed women.



THE WOMEN'S HOPE, EDUCATION AND TRAINING TRUST

Contributed R185 000

The trust was founded to support women-led organisation through promoting a culture of giving where women enjoy their human rights and have access to education, training and sustainable income.

TYGERBERG CHILDREN'S HOSPITAL TRUST

Contributed R100 000

Assists and support mother and child patients with child and family centre, research and development, leadership and educational training.

A group of smiling children, likely of African descent, are shown from the chest up. They are all smiling broadly and have their hands raised in front of them, with fingers spread. The image is slightly faded, serving as a background for the text.

UBUNTU 4 ALL

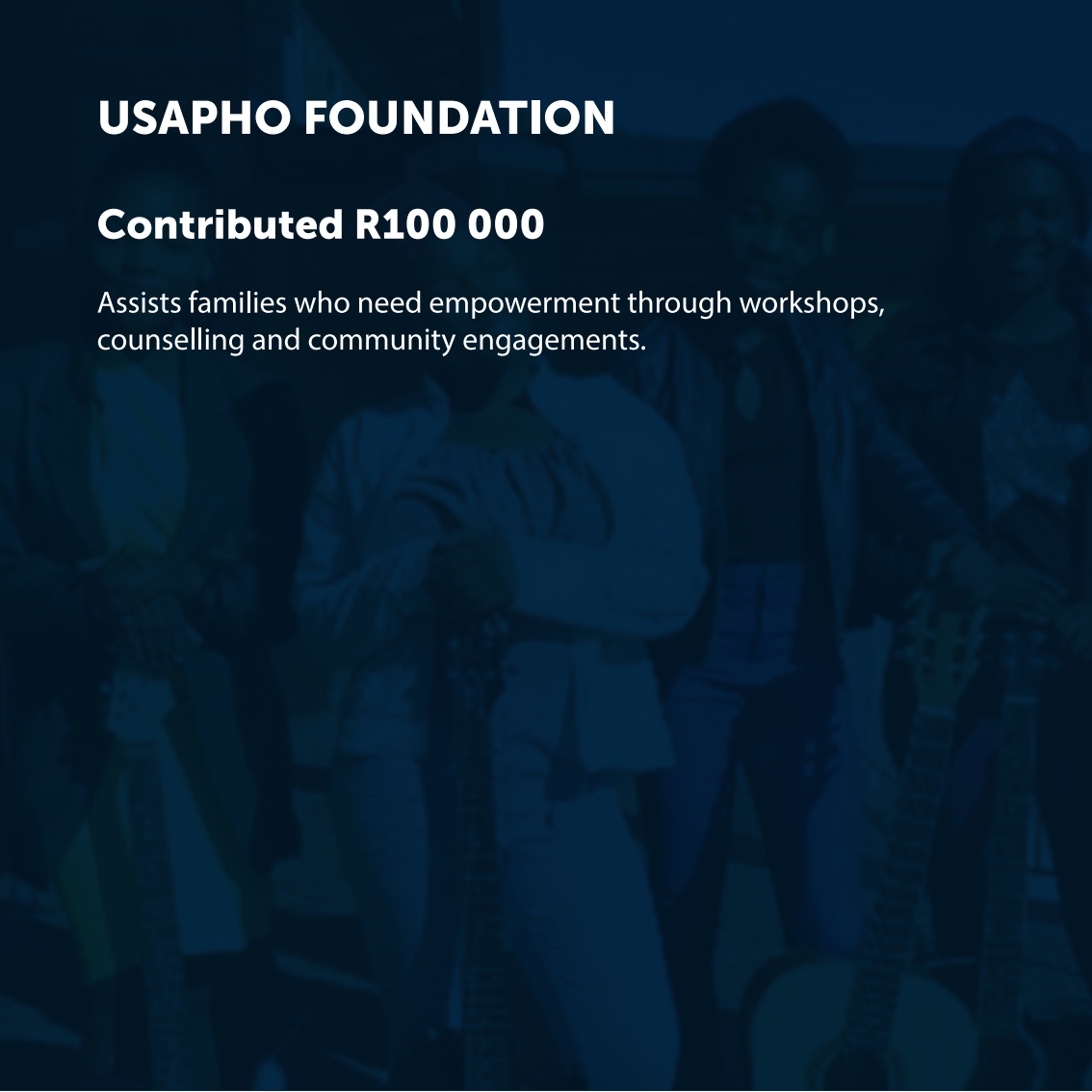
Contributed R70 000

Provides educational and social support to vulnerable children, youth and families.

USAPHO FOUNDATION

Contributed R100 000

Assists families who need empowerment through workshops, counselling and community engagements.





THE WOMEN'S HOPE, EDUCATION AND TRAINING TRUST

Contributed R185 000

The trust was founded to support women-led organisation through promoting a culture of giving where women enjoy their human rights and have access to education, training and sustainable income.

NOAH

Contributed R200 000

NOAH enables social pensioners to remain active, independent and purposeful in their homes and communities for as long as possible through the provision of communal housing, primary health care, social support and social enterprise development.

SALESIAN INSTITUTE YOUTH PROJECT

Contributed R100 000

Salesian Institute Youth Projects works in youth education and skills development, changing the lives of vulnerable children and youth-at-risk in and around Cape Town. They offer support, life skills, and vocational training.

SISTERS INCORPORATED

Contributed R150 000

Sisters Incorporated is a home for abused women and their children, rape survivors and pregnant women considering putting their babies up for adoption. They aim to help the women in our care to heal therapeutically from what they have experienced, assist them to equip themselves to enter the job market and take up the threads of their lives when it is time for them to re-enter the community.

SIYAZANA YOUTH DEVELOPMENT FUND

Contributed R119 000

Aiming to improve the lives of previously disadvantaged children and youth.

SOUTH AFRICAN EDUCATION AND SUSTAINABILITY (SAYES)

Contributed R200 000

They work with vulnerable and neglected youth populations in transition from Child and Youth Care Centres (children's homes) and high schools, matching them with volunteer mentors to deliver targeted interventions known to create differences we can measure.

ST HELENA SANDVELD HOSPICE

Contributed R135 000

Assist terminally ill and their families living in the hospice.

THE PEBBLES PROJECT TRUST

Contributed R97 800

Assist children and families living in rural farming areas ensures that they have access to a high standard of education, health, social and recreational services- focusing on the less accessible regions.

MORE PROJECTS

Western Cape Fire Fighters Association

R 50 000

Xstitch NPO

R 90 000

Peace Haven Senior Citizen Services Centre

R 90 000

Indigenous Pride Africa

R 50 000

Carly Jordan Foundation

R50 000